

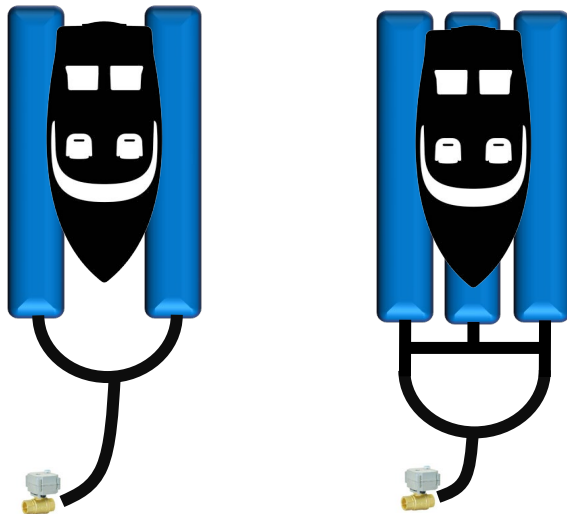
AC- BLOWER CONTROL BOX



SAFER, FASTER, STRONGER



Typical Hose Connection Diagram

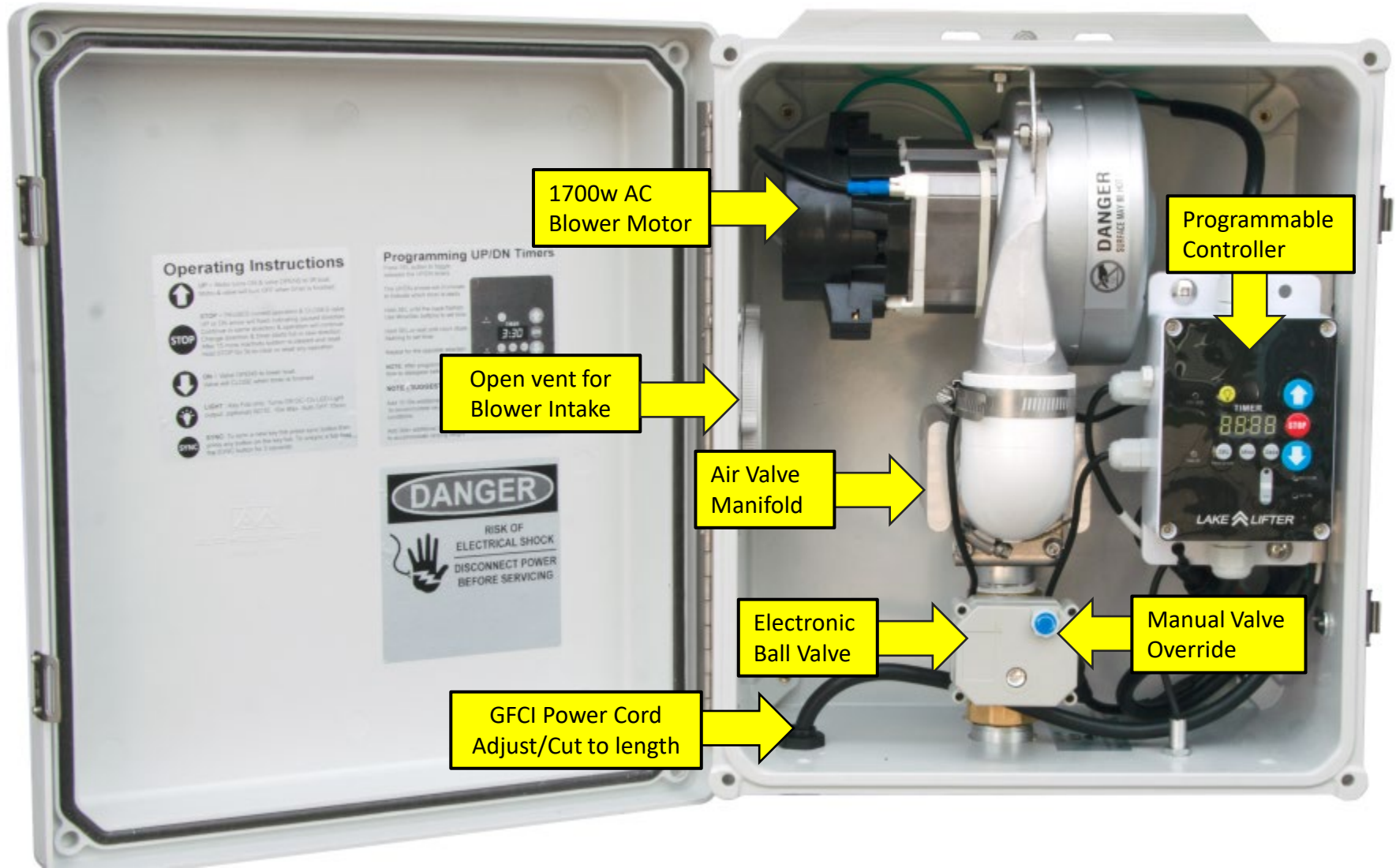




! IMPORTANT !

MAKE SURE ALL POWER TO THE DOCK & LIFT IS GFCI PROTECTED!

KEEP all electrical wires & extension cords out of the water!



1700w AC Blower Motor

Programmable Controller

Open vent for Blower Intake

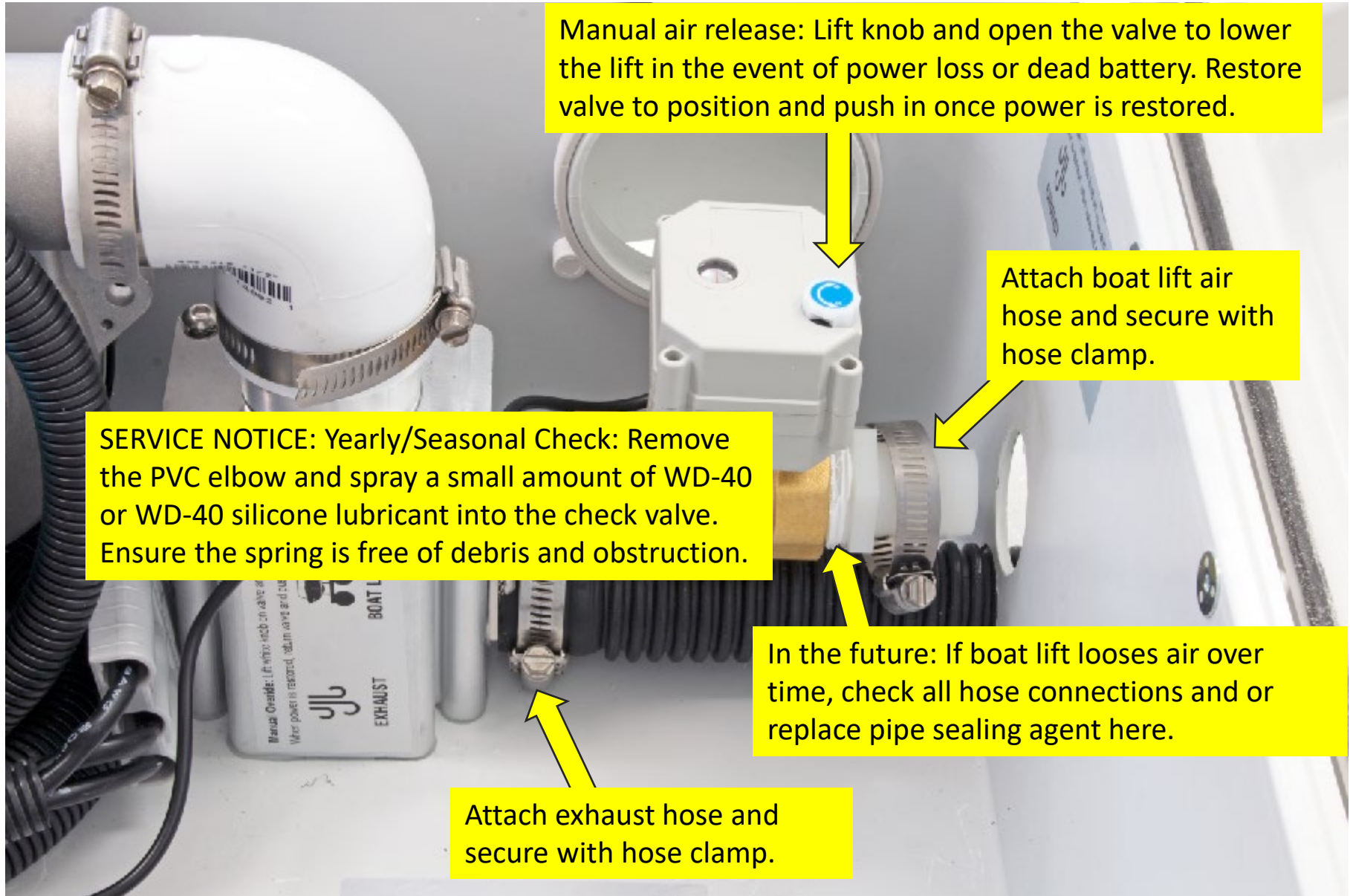
Air Valve Manifold

Electronic Ball Valve

Manual Valve Override

GFCI Power Cord Adjust/Cut to length

Hose & Valve Connections



Manual air release: Lift knob and open the valve to lower the lift in the event of power loss or dead battery. Restore valve to position and push in once power is restored.

Attach boat lift air hose and secure with hose clamp.

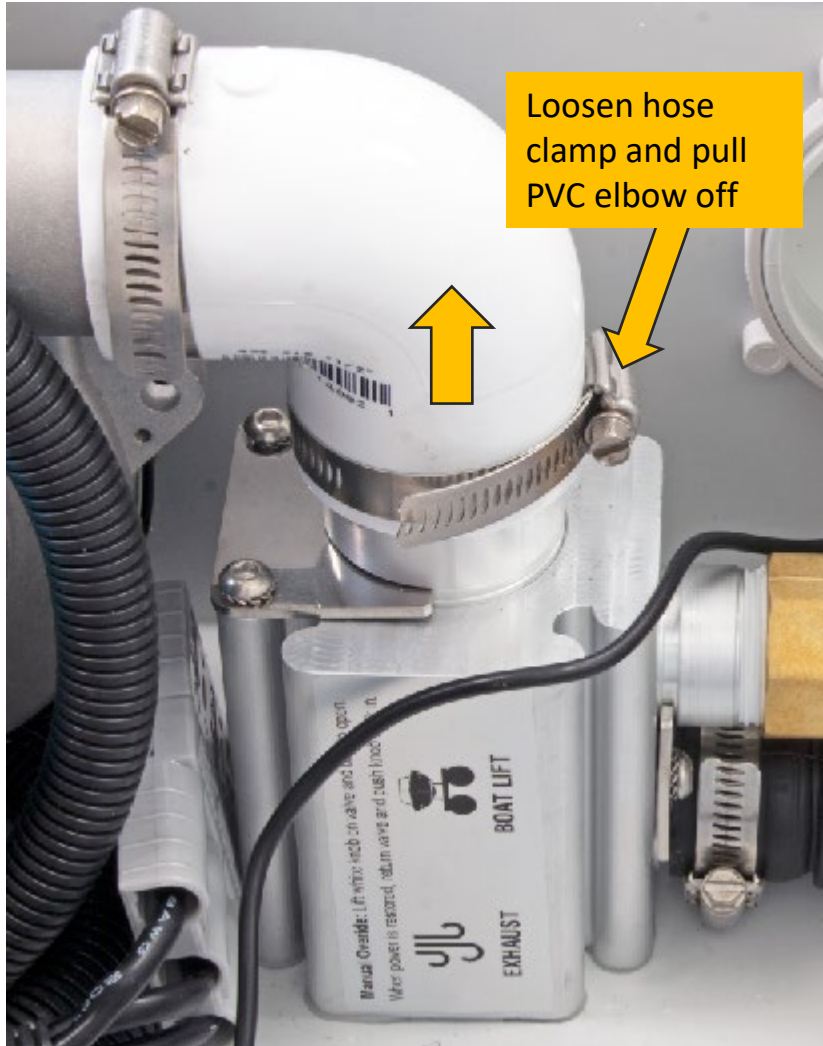
SERVICE NOTICE: Yearly/Seasonal Check: Remove the PVC elbow and spray a small amount of WD-40 or WD-40 silicone lubricant into the check valve. Ensure the spring is free of debris and obstruction.

In the future: If boat lift loses air over time, check all hose connections and or replace pipe sealing agent here.

Attach exhaust hose and secure with hose clamp.

Seasonal Maintenance Check

SERVICE NOTICE: Yearly/Seasonal Check: Remove the PVC elbow and spray a small amount of WD-40 or WD-40 silicone lubricant into the check valve. Ensure the spring is free of debris and obstruction.



Ensure spring action plunger is moving smoothly and free of dirt and debris



Use small amount of WD-40 or WD-40 Silicone lubricant on spring & inside body

Button Function & Programming v3 Leak Guard



UP = Motor turns ON & valve OPENS to lift boat.
Motor & valve will turn OFF when timer is finished.



STOP = PAUSES current operation & CLOSES valve.
UP or DN arrow will flash indicating paused direction.
Continue in same direction & operation will continue.
Change direction & timer starts full in new direction.
After 15 mins inactivity system is cleared and reset.
Hold STOP for 3s to clear or reset any operation.



DN = Valve OPENS to lower boat:
Valve will CLOSE when timer is finished.



LIGHT : Turns on LED light output: Default auto off timer is set to 15:00mins. To adjust light Auto-Off timer HOLD light button until timer flashes: Use Mins & Secs button to adjust as needed.



SELECT: Selects the UP/DN timer to be programmed. The UP/DN arrows will illuminate indicating which timer is ready for programming. HOLD the SEL button; when timer starts flashing use Mins & Secs buttons to set time.



Mins: Increases the time by 1:00 minute



Secs: Increases the time by 0:05 seconds



LEAK GUARD: Light indicates guard mode. Flashing light indicates leak has occurred. Press to check # of leaks. LONG press to reset back to zero.
E:09 Sensor Failure Error & Alarm: Sensor Failure. Fix sensor. LONG press while on E:09 to clear alarm. Quick & LONG press again to show/clear leak #
NOTE: Sensor requires 5 seconds continuous water contact to activate. Leak Guard will only enter guard mode after FULLY completing the UP operation. If the UP operation is not fully completed leak guard will NOT activate.



FOB SYNC: To sync a new key fob press sync button then press any button on the key fob. To un sync a fob hold the SYNC button for 3 seconds

Quick Programming Guide

Press SEL button to toggle between the UP/DN timers.

The UP/DN arrows will illuminate to indicate which timer is ready.

Hold SEL button until the clock flashes. Use Mins/Sec buttons to set time.

Hold SEL or wait until clock stops flashing and time is now programmed.

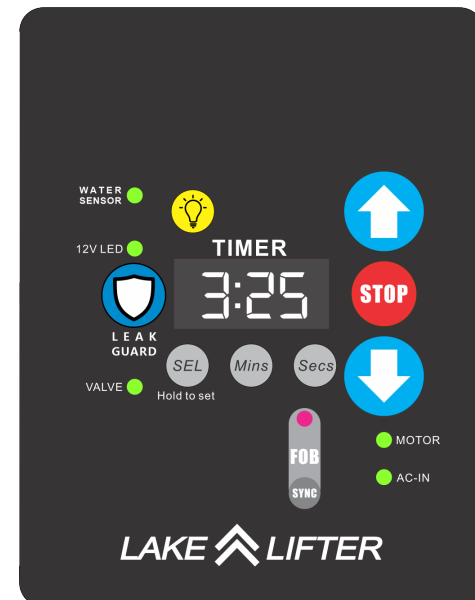
Repeat for the opposite direction.

WAIT: When timer disappears, you may now operate. (or hold stop for 3s)

NOTE / SUGGESTIONS:

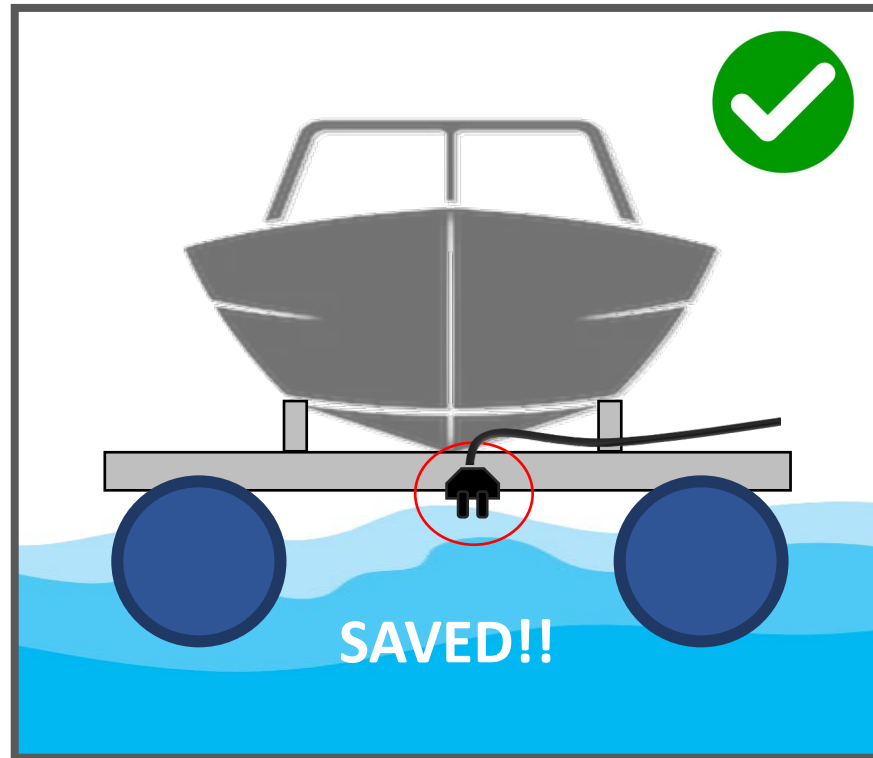
Add 15-30s additional UP time to accommodate varying weight conditions

Add 30s-1m additional DN time to accommodate varying weight conditions.





PROTECT YOUR BOAT WITH LEAK GUARD!



Automatically lifts your boat before it floats away!

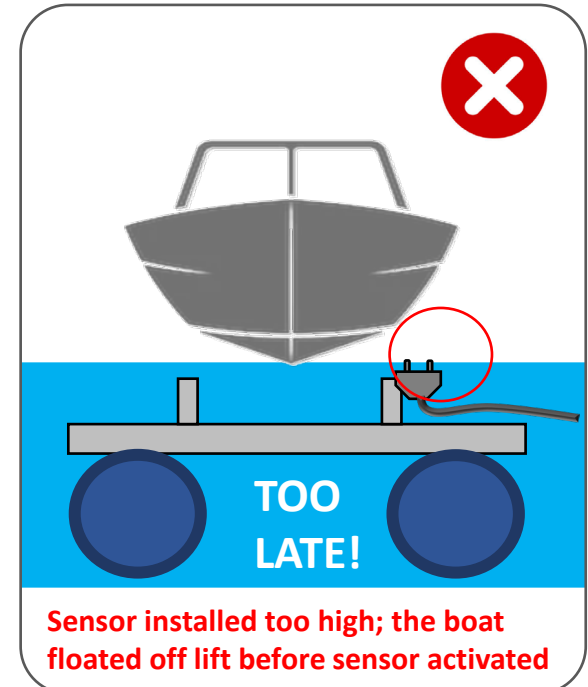
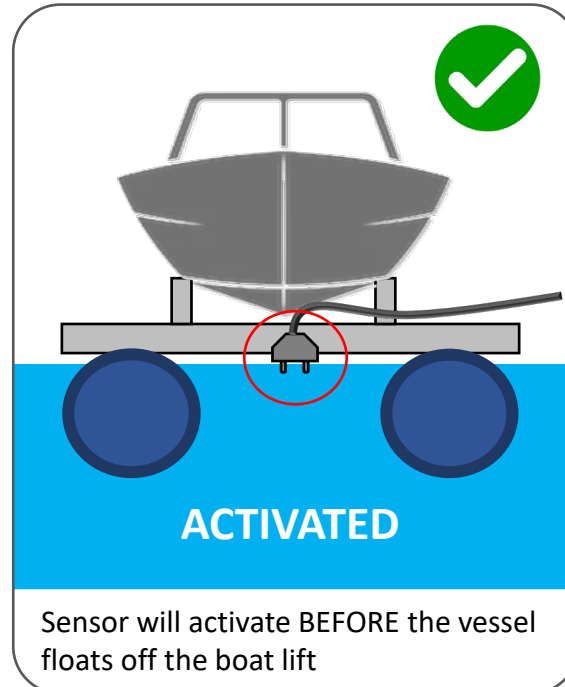
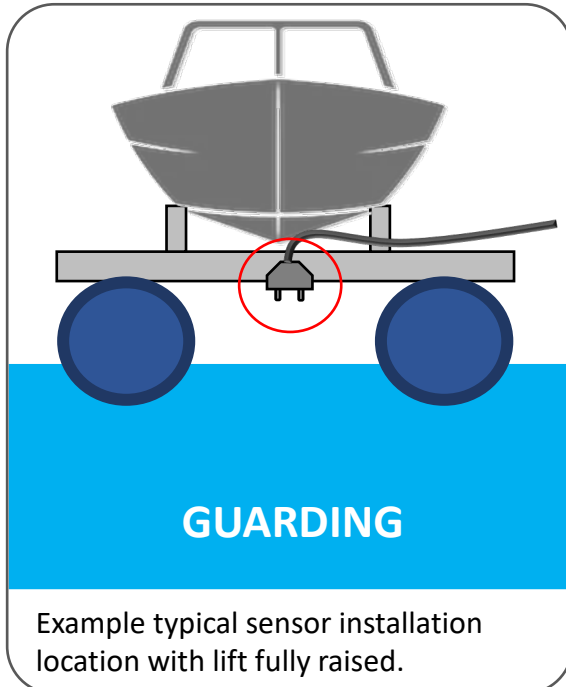
LEAK GUARD & WATER SENSOR

Protect your vessel when away with Lake Lifters NEW Leak Guard feature. Leak Guard will automatically raise the boat lift in the event of air loss in the tanks or hoses. When the sensor touches the water for 5 continuous seconds, the lifting operation will start and raise the boat lift. The Leak event will be recorded at the controller indicated by a flashing Leak Guard button. User may press the button and check the number of leaks that have occurred since last use. User can then determine the severity of the leak. Example; 1 leak over several months may not be of concern compared to 3-leaks within a day or two. User may clear the # of detected leaks by holding down the Leak Guard button to reset back to ZERO.

INSTALLATION LOCATION: Install leak guard water sensor in a position that is ABOVE the water when the lift is fully raised.

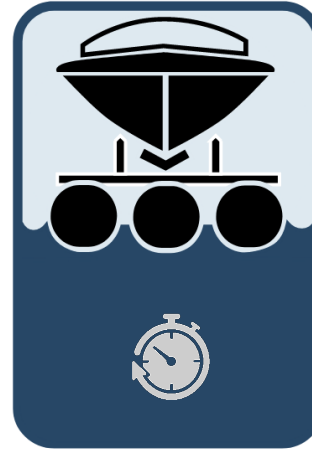
IMPORTANT: the sensor must be placed in a position that touches the water BEFORE the vessel floats away.

OPERATION NOTES: The sensor must clear the water BEFORE the UP timer completes or there will be a system error & alarm indicated by an **E:09 Error code**. This may occur if the sensor became detached and fell into the water or the sensor cable was pinched. In such a case, the sensor would be activated ONLY ONCE. This prevents the blower motor from running continuously over and over due to sensor failure. To clear the E:09 error alarm, short press the leak guard button to toggle between the E:09 and the L:0X. Once on the E:09 LONG press to clear error code. Next Short press to view Leak # and LONG Press to reset Leak # back to zero.





Fully lower the lift and position the vessel onto the lift. Use a stopwatch to calculate the time required to fully lift the vessel. Make note of this time and add 15-20 seconds to cover varying weights of the vessel. Program this time into the controller.



Use a stopwatch and calculate the time to fully lower the boat & lift. Make note of this time and add 1Min to cover varying weight conditions. Program this time into the controller. **NOTE:** without vessel on lift the time to lower will be significantly longer: User may have to run through the DN operation more than once.

Quick Programming Guide

Press SEL button to toggle between the UP/DN timers.

The UP/DN arrows will illuminate to indicate which timer is ready.

Hold SEL button until the clock flashes. Use Mins/Sec buttons to set time.

Hold SEL or wait until clock stops flashing and time is now programmed.

Repeat for the opposite direction.

WAIT: When timer disappears, you may now operate. (or hold stop for 3s)

NOTE / SUGGESTIONS:

Add 15-30s additional UP time to accommodate varying weight conditions

Add 30s-1m additional DN time to accommodate varying weight conditions.