

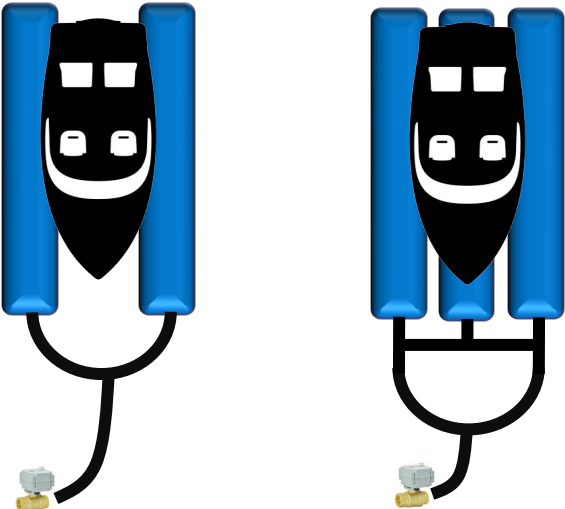
AC- BLOWER CONTROL BOX



SAFER, FASTER, STRONGER



Typical Hose Connection Diagram

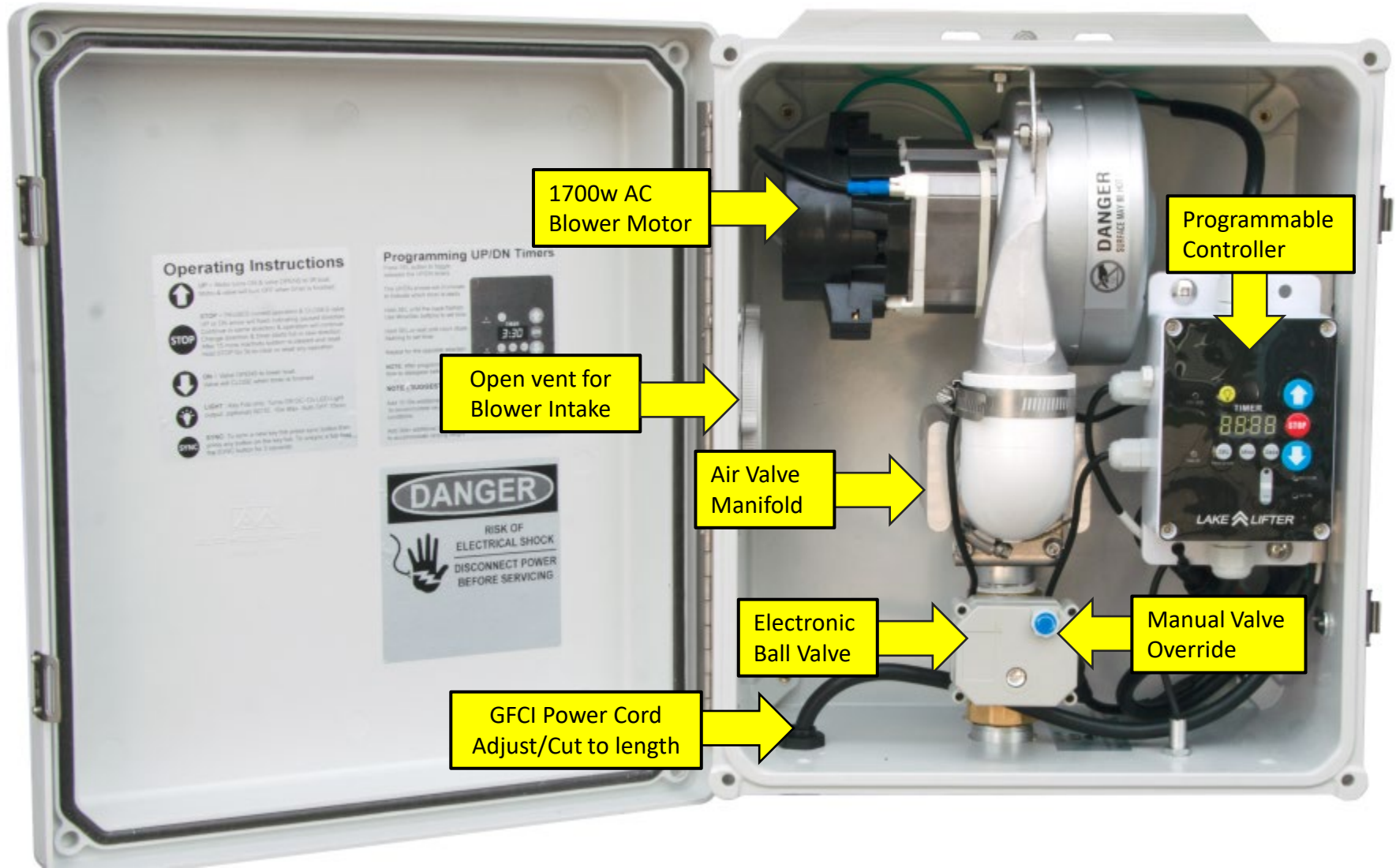




! IMPORTANT !

MAKE SURE ALL POWER TO THE DOCK & LIFT IS GFCI PROTECTED!

KEEP all electrical wires & extension cords out of the water!



1700w AC Blower Motor

Programmable Controller

Open vent for Blower Intake

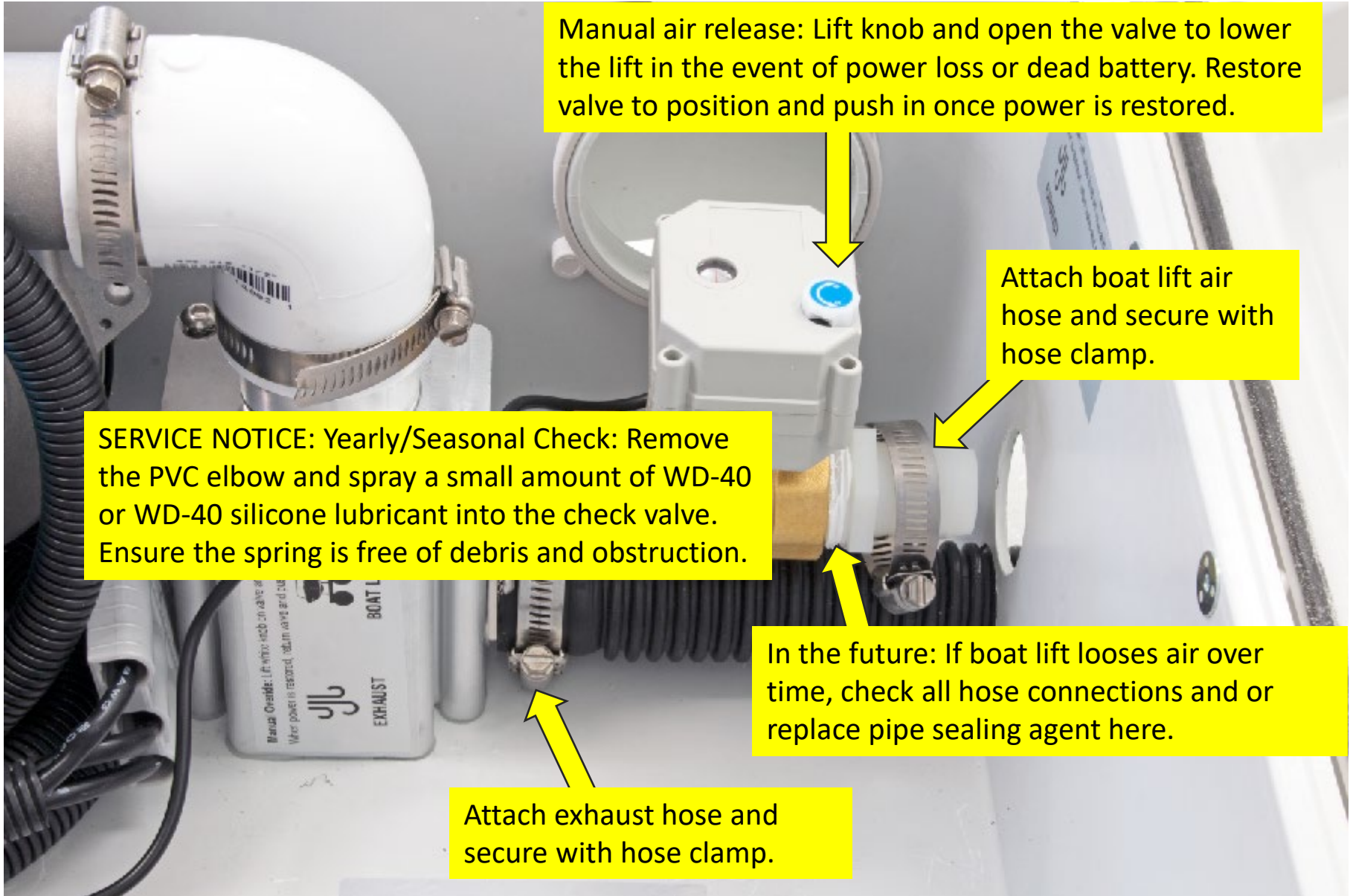
Air Valve Manifold

Electronic Ball Valve

Manual Valve Override

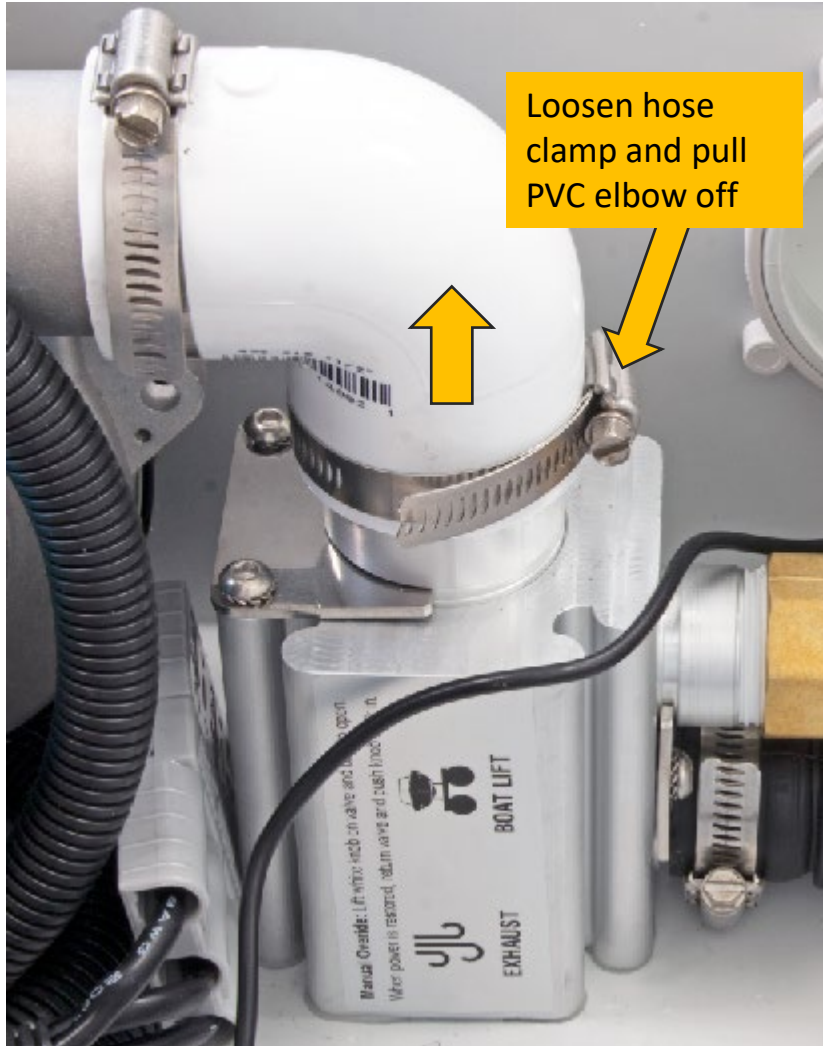
GFCI Power Cord Adjust/Cut to length

Hose & Valve Connections



Seasonal Maintenance Check

SERVICE NOTICE: Yearly/Seasonal Check: Remove the PVC elbow and spray a small amount of WD-40 or WD-40 silicone lubricant into the check valve. Ensure the spring is free of debris and obstruction.



Ensure spring action plunger is moving smoothly and free of dirt and debris



Use small amount of WD-40 or WD-40 Silicone lubricant on spring & inside body



UP = Motor turns ON & valve OPENS to lift boat.
Motor & valve will turn OFF when timer is finished.



STOP = PAUSES current operation & CLOSES valve.
UP or DN arrow will flash indicating paused direction.
Continue in same direction & operation will continue
Change direction & timer starts full in new direction.
After 15 mins inactivity system is cleared and reset
Hold STOP for 3s to clear or reset any operation.



DN = Valve OPENS to lower boat:
Valve will CLOSE when timer is finished.



LIGHT : Turns on LED light output: Default auto off timer is set to 15:00mins. To adjust light Auto-Off timer HOLD light button until timer flashes: Use Mins & Secs button to adjust as needed.



SELECT: Press to select the UP/DN timer you wish to program. The UP/DN arrows will illuminate to indicate which timer is ready for programming.
HOLD the SEL button, when timer starts flashing it is now ready to program with the Mins & Secs buttons.



Mins: Increases the time by 1:00 minute



Secs: Increases the time by 0:05 seconds



FOB SYNC: To sync a new key fob press sync button then press any button on the key fob. To un sync a fob hold the SYNC button for 3 seconds

Quick Programming Guide

Press SEL button to toggle between the UP/DN timers.

The UP/DN arrows will illuminate to indicate which timer is ready.

Hold SEL button until the clock flashes. Use Mins/Sec buttons to set time.

Hold SEL or wait until clock stops flashing and time is now programmed.

Repeat for the opposite direction.

WAIT: When timer disappears, you may now operate. (or hold stop for 3s)

NOTE / SUGGESTIONS:

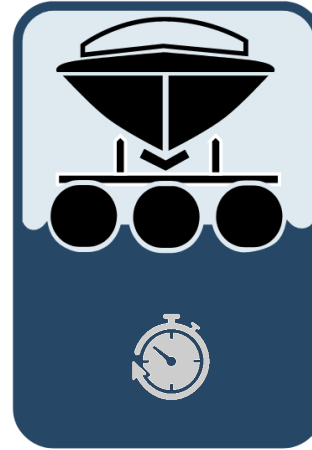
Add 15-30s additional UP time to accommodate varying weight conditions

Add 30s-1m additional DN time to accommodate varying weight conditions.





Fully lower the lift and position the vessel onto the lift. Use a stopwatch to calculate the time required to fully lift the vessel. Make note of this time and add 15-20 seconds to cover varying weights of the vessel. Program this time into the controller.



Use a stopwatch and calculate the time to fully lower the boat & lift. Make note of this time and add 1Min to cover varying weight conditions. Program this time into the controller. **NOTE:** without vessel on lift the time to lower will be significantly longer: User may have to run through the DN operation more than once.

Quick Programming Guide

Press SEL button to toggle between the UP/DN timers.

The UP/DN arrows will illuminate to indicate which timer is ready.

Hold SEL button until the clock flashes. Use Mins/Sec buttons to set time.

Hold SEL or wait until clock stops flashing and time is now programmed.

Repeat for the opposite direction.

WAIT: When timer disappears, you may now operate. (or hold stop for 3s)

NOTE / SUGGESTIONS:

Add 15-30s additional UP time to accommodate varying weight conditions

Add 30s-1m additional DN time to accommodate varying weight conditions.