

DC-SOLAR BLOWER CONTROL BOX

SAFER, FASTER, STRONGER

Requires 2pcs 12v Batteries (not provided)

Battery Size: 12v-55A AGM Batteries also known as "Wheel chair batteries" or Size 22NF



DC-SOLAR BLOWER CONTROL BOX

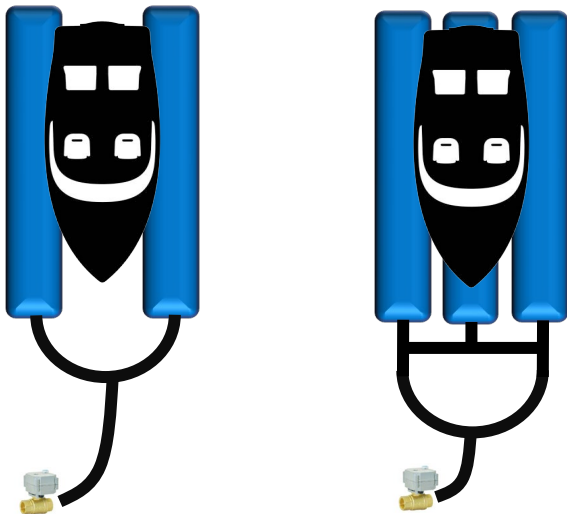


SAFER, FASTER, STRONGER

Requires 2pcs 12v Batteries (not provided)

Battery Size: 12v-55A AGM Batteries also known as "Wheel chair batteries" or Size 22NF

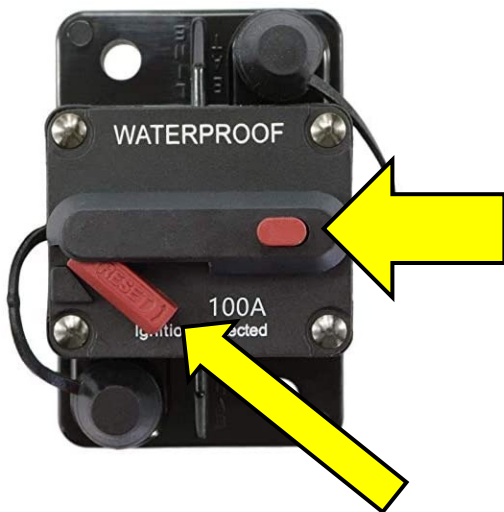
Typical Hose Connection Diagram





Connecting the battery power cables backwards will result in permanent damage to the controller.

 **IMPORTANT** 



Make sure the fuse breaker is disconnected as shown before connecting wires:

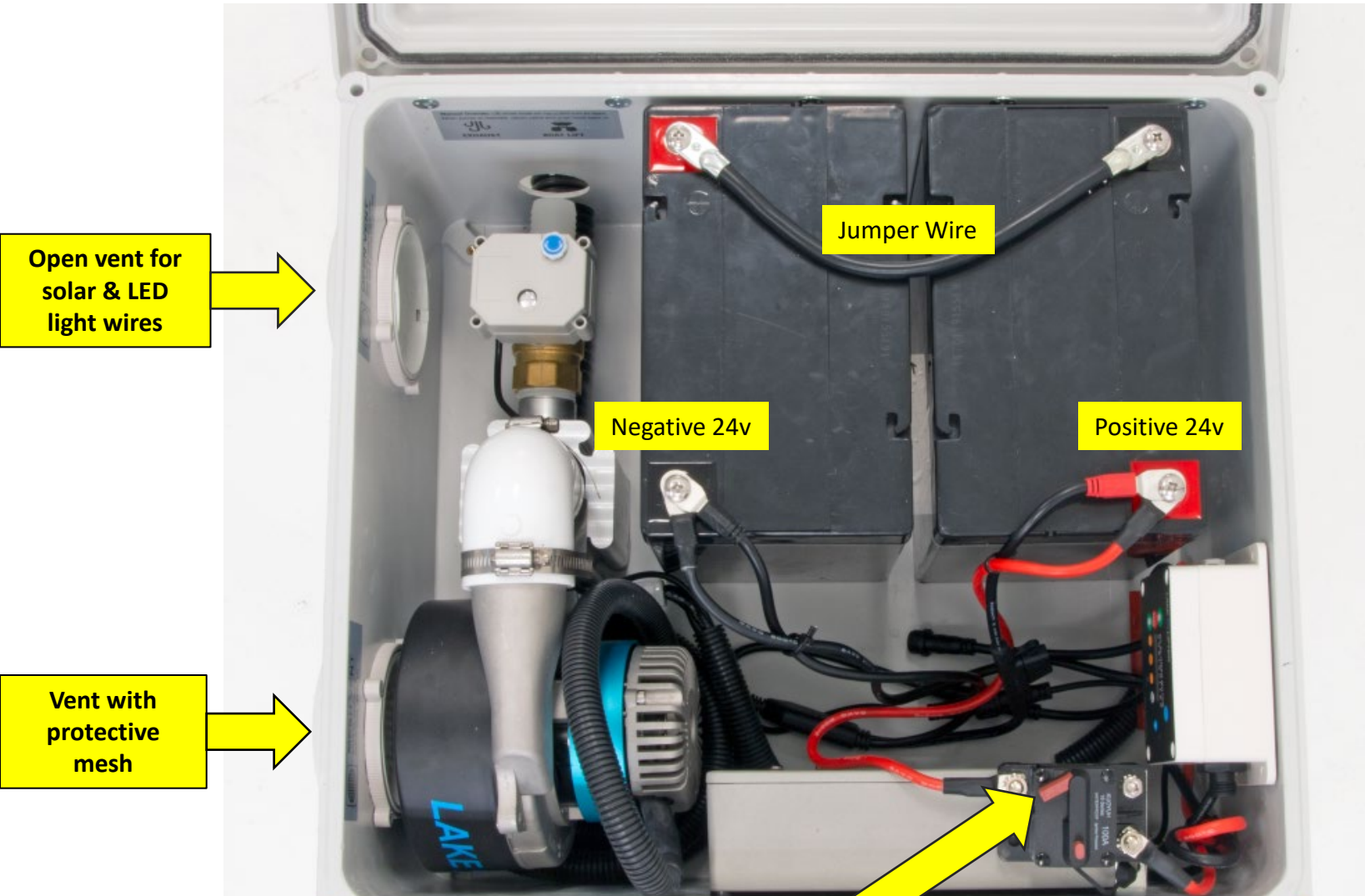
Please pay attention to your connections and double check all wiring before connecting the controller and turning breaker on

Box Feet & Stick on Spacers

1. Install all 4 box feet as shown: These will elevate the box to allow for any drainage.
2. Install two stick on spacers as shown. (prevents box sag over time due to battery weight)

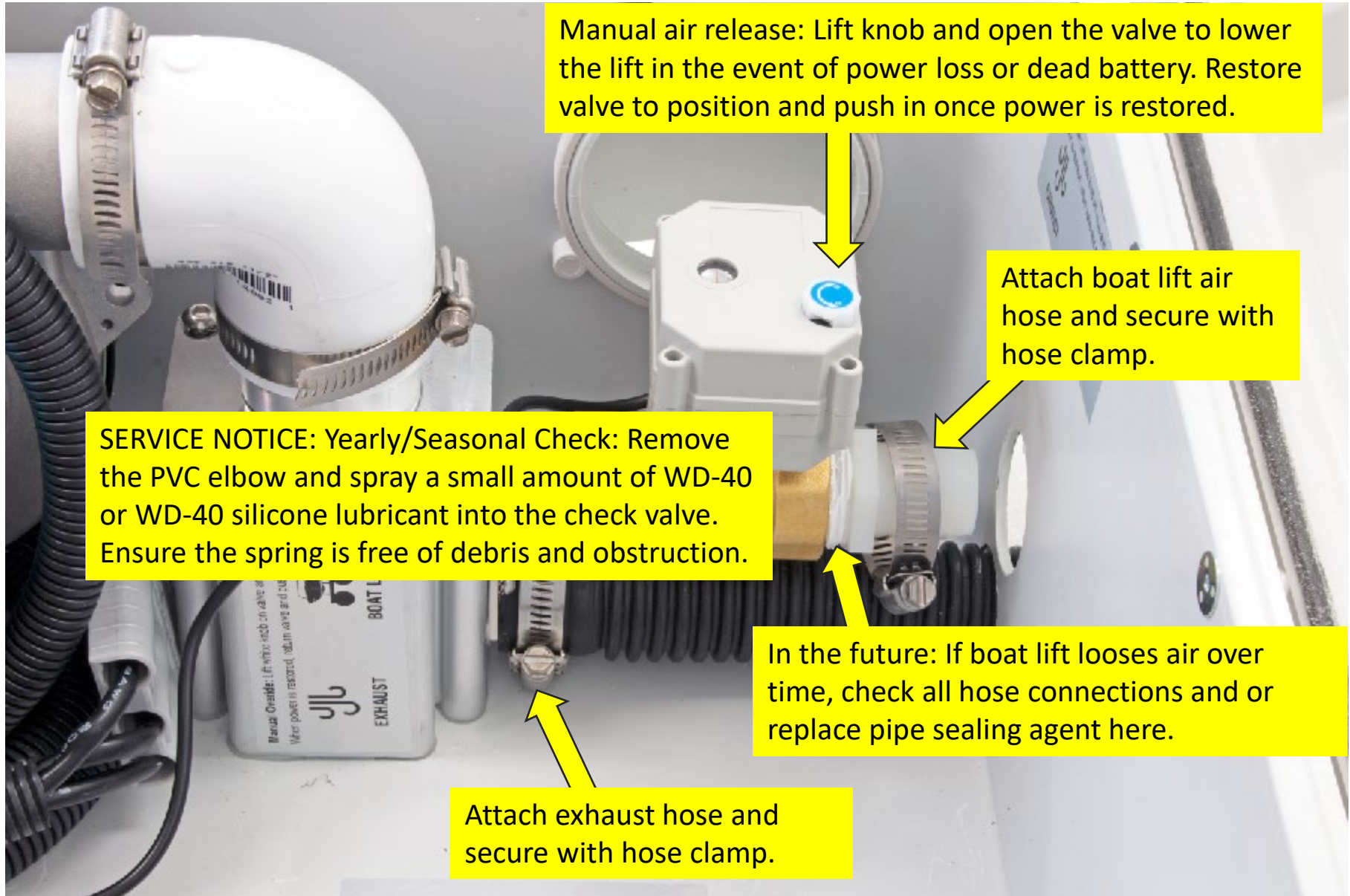


Battery Connections & Layout



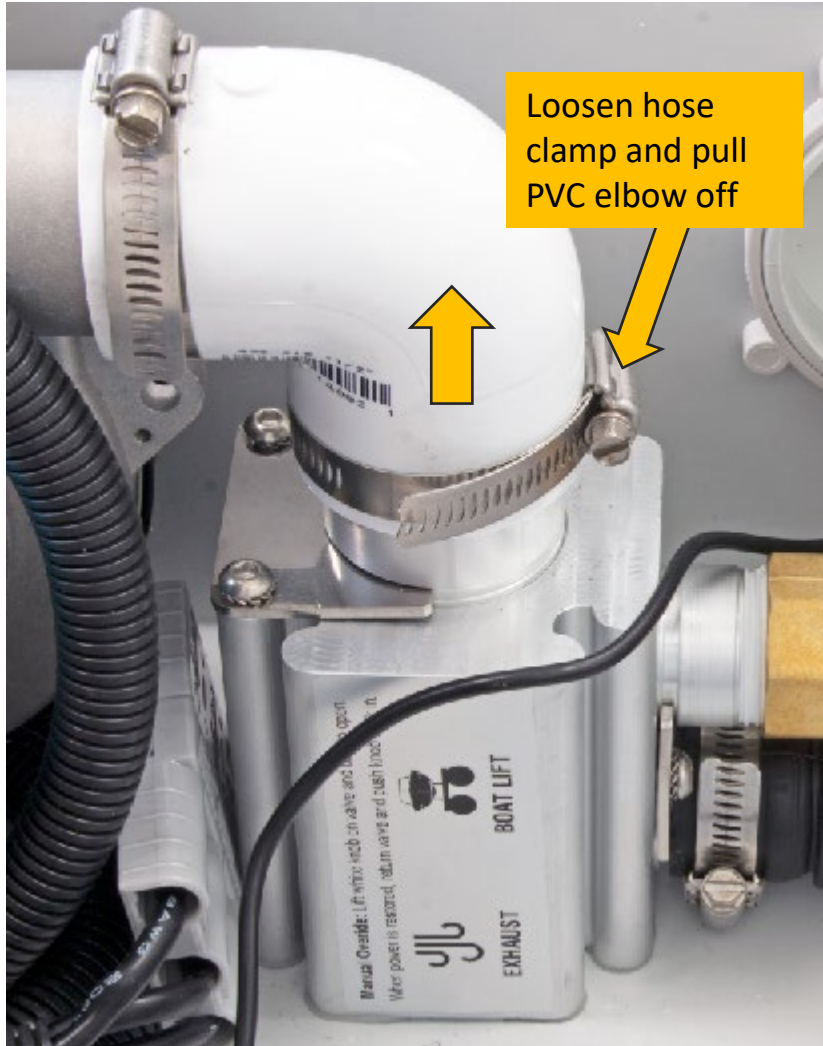
IMPORTANT: Make sure fuse breaker is **OFF** when connecting/disconnecting wires.

Hose & Valve Connections



Seasonal Maintenance Check

SERVICE NOTICE: Yearly/Seasonal Check: Remove the PVC elbow and spray a small amount of WD-40 or WD-40 silicone lubricant into the check valve. Ensure the spring is free of debris and obstruction.



Ensure spring action plunger is moving smoothly and free of dirt and debris



Use small amount of WD-40 or WD-40 Silicone lubricant on spring & inside body

Button Function & Programming v2



UP = Motor turns ON & valve OPENS to lift boat.
Motor & valve will turn OFF when timer is finished.



STOP = PAUSES current operation & CLOSES valve.
UP or DN arrow will flash indicating paused direction.
Continue in same direction & operation will continue.
Change direction & timer starts full in new direction.
After 15 mins inactivity system is cleared and reset
Hold STOP for 3s to clear or reset any operation.



DN = Valve OPENS to lower boat:
Valve will CLOSE when timer is finished.



LIGHT : Turns on LED light output: Default auto off timer is set to 15:00mins. To adjust light Auto-Off timer HOLD light button until timer flashes: Use Mins & Secs button to adjust as needed.



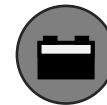
SELECT: Press to select the UP/DN timer you wish to program. The UP/DN arrows will illuminate to indicate which timer is ready for programming.
HOLD the SEL button, when timer starts flashing it is now ready to program with the Mins & Secs buttons.



Mins: Increases the time by 1:00 minute intervals
1:00, 2:00, 3:00 20:00 > 0:00, 1:00 ...



Secs: Increases the time by 0:05 second intervals
:05, :10, :15 :55 > :00, :05 ...



BAT: Displays Battery Level & Voltage
Press again to return to Lifting/Lowering Timer



FOB SYNC: To sync a new key fob press sync button then press any button on the key fob. To un sync a fob hold the SYNC button for 3 seconds

Quick Programming Guide

Press SEL button to toggle between the UP/DN timers.

The UP/DN arrows will illuminate to indicate which timer is ready.

Hold SEL button until the clock flashes. Use Mins/Sec buttons to set time.

Hold SEL or wait until clock stops flashing and time is now programmed.

Repeat for the opposite direction.

NOTE / SUGGESTIONS:

Add 15-30s additional UP time to accommodate varying weight conditions

Add 30s+ additional DN time to accommodate varying weight conditions.

