

DC-SOLAR BLOWER CONTROL BOX

SAFER, FASTER, STRONGER

Requires 2pcs 12v Batteries (not provided)

Battery Size: 12v-55A AGM Batteries also known as "Wheel chair batteries" or Size 22NF



DC-SOLAR BLOWER CONTROL BOX

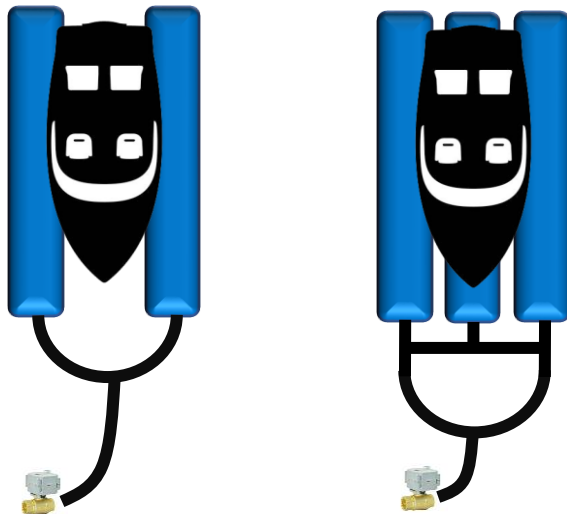


SAFER, FASTER, STRONGER

Requires 2pcs 12v Batteries (not provided)

Battery Size: 12v-55A AGM Batteries also known as "Wheel chair batteries" or Size 22NF

Typical Hose Connection Diagram



Important Warranty Information



Connecting the battery power cables backwards will lead to instant & permanent damage to the motor driver unit without warning.

Warranty Voided: Replacement @ user expense



IMPORTANT



Make sure the fuse breaker is disconnected as shown before connecting wires to battery:

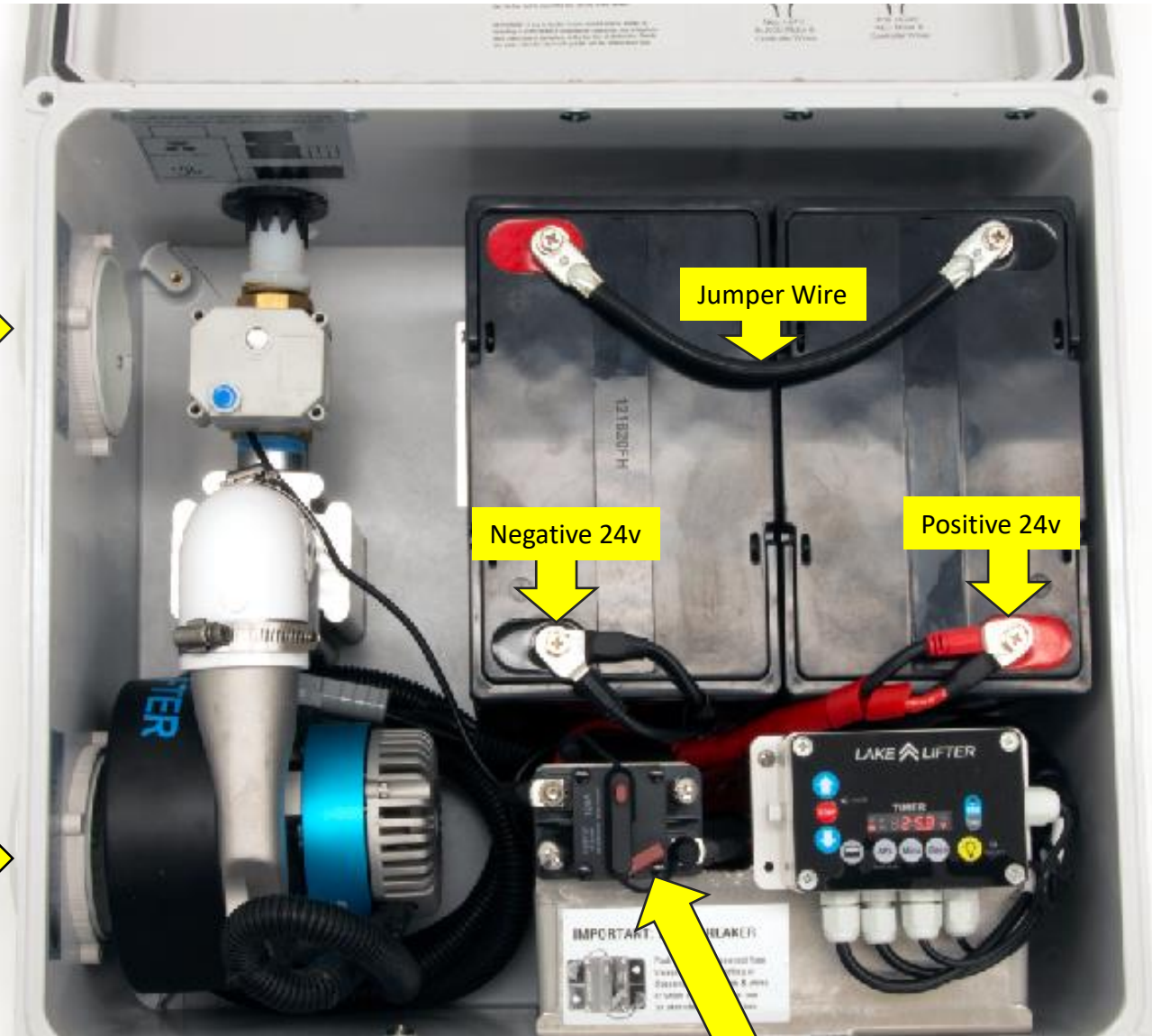
Please pay attention to your connections. Double check all wiring before turning the fuse breaker on!

Box Feet & Stick on Spacers

1. Install all 4 box feet as shown: These will elevate the box to allow for any drainage.
2. Install two stick on spacers as shown. (prevents box sag over time due to battery weight)



Battery Connections & Layout



Open vent for solar & LED light wires

Jumper Wire

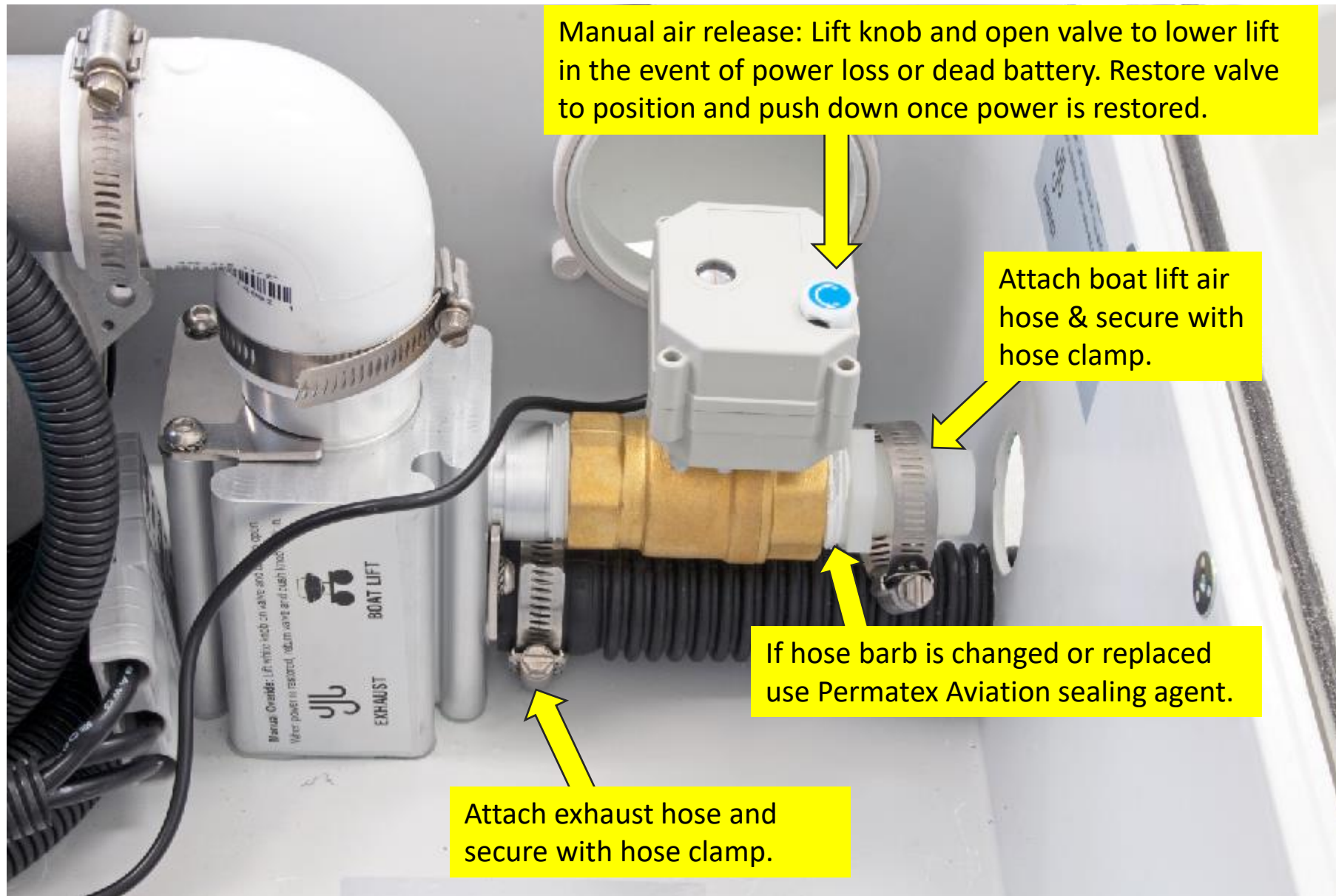
Negative 24v

Positive 24v

Vent with protective mesh

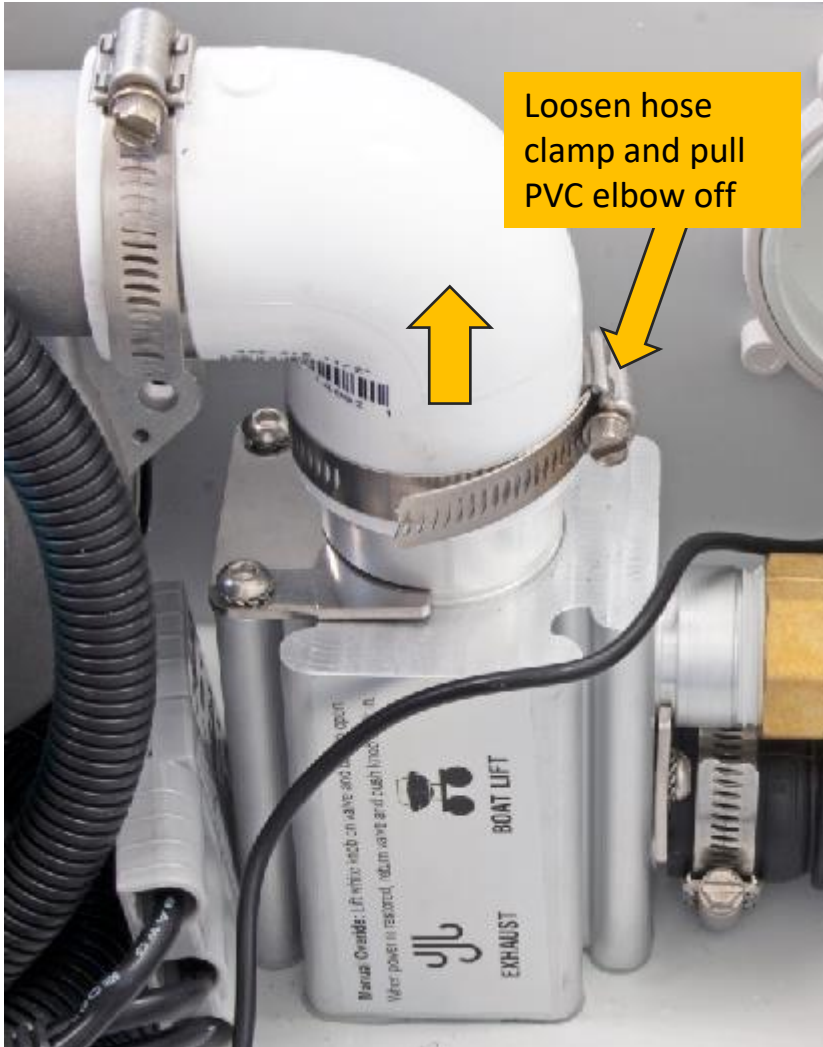
IMPORTANT: Make sure fuse breaker is **OFF** when connecting/disconnecting wires.

Hose & Valve Connections



Seasonal Maintenance Check

SERVICE NOTICE: Seasonal Check: Remove the PVC elbow and spray a small amount of WD-40 or WD-40 silicone lubricant into the check valve. Ensure the spring & valve are free of debris and obstruction.



Ensure spring action plunger is moving smoothly and free of dirt and debris



Button Function & Programming



UP = Motor turns ON & valve OPENS to lift boat.
Motor & valve will turn OFF when timer is finished.



STOP = PAUSES current operation & CLOSES valve.
UP or DN arrow will flash indicating paused direction.
Continue in same direction & operation will continue.
Change direction & timer starts full in new direction.
After 15 mins inactivity system is cleared and reset
Hold STOP for 3s to clear or reset any operation.



DN = Valve OPENS to lower boat:
Valve will CLOSE when timer is finished.



LIGHT : Turns on LED light output: Default auto off timer is set to 15:00mins. To adjust light Auto-Off timer HOLD light button until timer flashes: Use Mins & Secs button to adjust as needed.



SELECT: Press to select the UP/DN timer you wish to program. The UP/DN arrows will illuminate to indicate which timer is ready for programming.
HOLD the SEL button, when timer starts flashing it is now ready to program with the Mins & Secs buttons.



Mins: Increases the time by 1:00 minute intervals
1:00, 2:00, 3:00 20:00 >>> 0:00, 1:00, 2:00 ...



Secs: Increases the time by 0:05 second intervals
:05, :10, :15 :55 >>> :00, :05, :10, :15 ...



BAT: Displays Battery Level & Voltage
Press again to return to Lifting/Lowering Timer



FOB SYNC: To sync a new key fob press sync button then press any button on the key fob. To un sync a fob hold the SYNC button for 3-5 seconds

Quick Programming Guide

Press SEL button to toggle between the UP/DN timers.

The UP/DN arrows will illuminate to indicate which timer is ready.

Hold SEL button until the clock flashes. Use Mins/Sec buttons to set time.

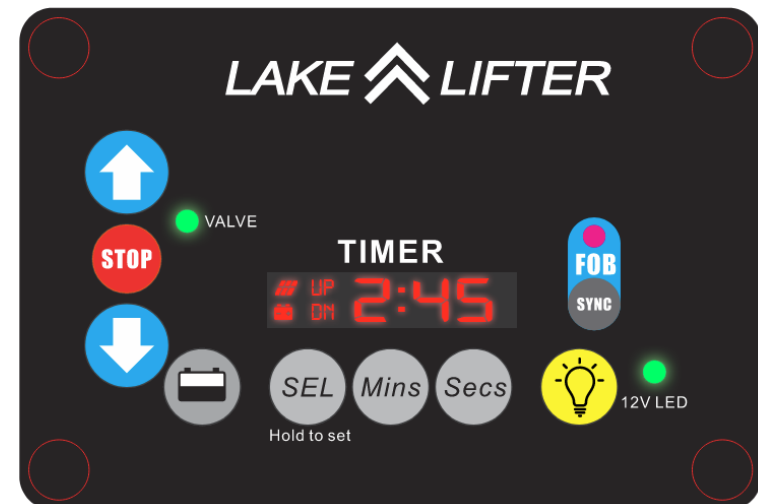
Hold SEL or wait until clock stops flashing and time is now programmed.

Repeat for the opposite direction.

NOTE / SUGGESTIONS:

Add 15-30s additional UP time to accommodate varying weight conditions

Add 1:00-3:00m additional DN time to accommodate varying weight conditions.



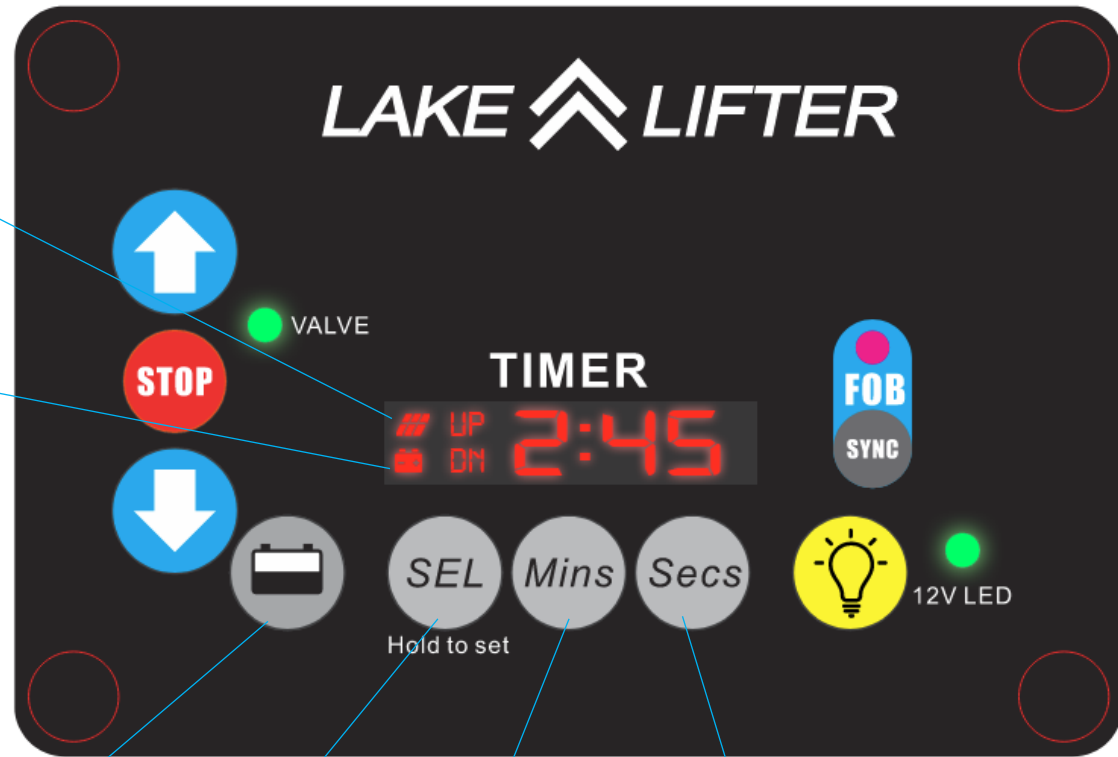
Controller Features

Solar Icon

Indicates solar panel is charging:
NOTE: will not display at nighttime

Battery Icon

Indicates battery is connected



Battery Info:
% Percentage
V Voltage

SEL

Mins

Increases timers by 1:00
UP to 20:00 then returns to 0

Secs

Increases timers by 0:05
UP to 00:55 then returns to 0

Short Press: Toggles between UP/DN timers
Long Press: Enter program timer mode (flashing)
Long Press Again = Set timer, or wait until timer stops flashing.